



REGIONAL TRANSPORTATION COMMISSION

Metropolitan Planning • Engineering & Construction • Public Transportation & Operations

Metropolitan Planning Organization of Washoe County, Nevada

Regional Transportation Commission of Washoe County

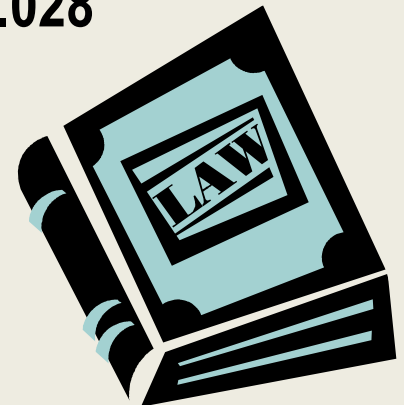
Interlocal Cooperative Agreement Presentation



Funding for Streets & Highways



- **RTC is responsible for the Regional Street & Highway Program**
- **The Regional Street & Highway Program is funded, in large part, by a fuel tax imposed pursuant to NRS 373.030**
- **Fuel tax revenues must be deposited in the County's "regional street and highway fund" and can only be used for street and highway construction "projects" as defined in NRS 373.028**



Funding for Streets & Highways



RTC evaluates and approves fuel tax funded projects in terms of the criteria in NRS 373.140(2):

- The priorities established by the Regional Transportation Plan
- The relation of the proposed work to other projects already constructed or authorized
- The relative need for the project in comparison to others proposed
- The money available

After RTC evaluates and approves the projects, the Board of County Commissioners then authorizes the projects. NRS 373.140(2)



Project Development Process



2040 Regional Transportation Plan (RTP)



10 Year Capital Improvement Program (CIP)



5 Year Regional Transportation Improvement Program (RTIP)



Program of Projects (POP)



Budget

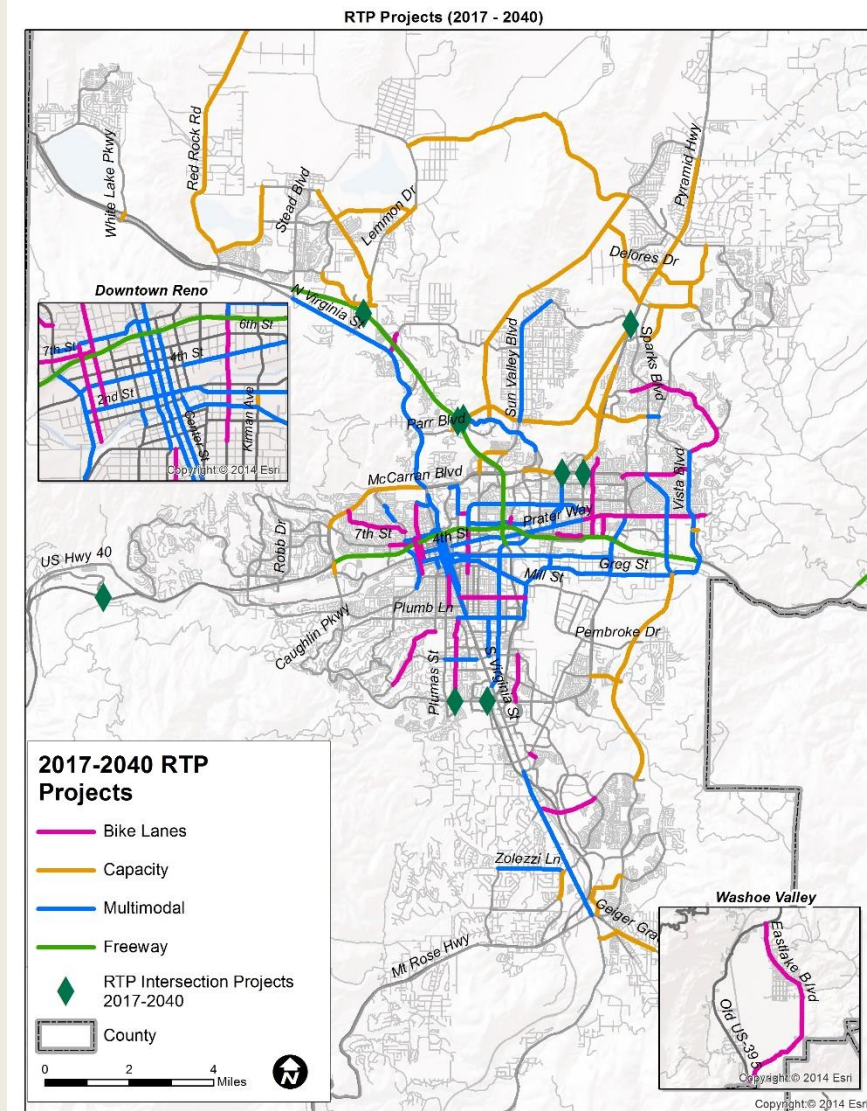


Project Delivery

Project Implementation Process



- Projects recommended by RTC Technical Advisory Committee (TAC) and Citizens Multimodal Advisory Committee (CMAC), approved by RTC Board
- Program of Projects reviewed by and input obtained from Reno, Sparks, Washoe County
- Interlocal Cooperative Agreement (ICA) executed for implementation



2040 Regional Transportation Plan Community Engagement



- Collaborative regional process
- Over a year of community engagement
 - Community planning workshops
 - Forums held to address transportation issues specific to veterans, seniors & ADA, economic development, freight & logistics, millennials, youth, bus & rail transit
 - Agency Working Group, CMAC, TAC, RRIF TAC
- Presentations to Reno, Sparks, Washoe County, Health District, Regional Planning Governing Board, Reno-Sparks Indian Colony
- Public comment period April 24-May 18, 2017; Public Open House April 25
- Approved at Public hearing at May 18, 2017 RTC Board meeting

Project Selection Process for RTP



RTC follows a performance-based, data-driven planning process:

- How are potential projects identified?
 - Previous RTP or other corridor plans/studies
 - Road Safety Assessments (RSA) and Safety Management Plans (SMP)
 - Public and agency comments
- What are the project prioritization criteria?
 - Addresses a high crash location or need identified in RSA/SMP
 - Compatibility with adjacent land uses/plans
 - Multimodal connectivity: bicycle and pedestrian component, transit component
 - ITS/operations improvement component
 - Identified as community priority through outreach process
 - Addresses area of high traffic congestion
- Projects recommended by RTC TAC and CMAC, approved by RTC Board

Project Selection Process for Pavement Preservation Program



RTC follows a performance-based, data-driven planning process:

- Group category included in RTP for pavement preservation (\$15m in FY 2019)
- Pavement condition data provided by jurisdictions
- Projects prioritized based on pavement condition and traffic volumes
- The Pavement Preservation team recommends a project list
 - Team includes staff from Reno, Sparks, Washoe County, and RTC

Project Selection Process for Bicycle, Pedestrian & ADA Projects



RTC implements a performance-based, data-driven planning process:

- Group category included in RTP for smaller bike/ped/ADA projects
- Projects identified and prioritized in the Bicycle and Pedestrian Master Plan
 - Identified in an existing plan
 - Located on regional road or connect to existing facility
 - Eliminate gap in connectivity
 - In a low income area
 - Connect to transit
 - Located near essential services (school, social services, affordable housing, medical services)
 - High density area
 - Constructability

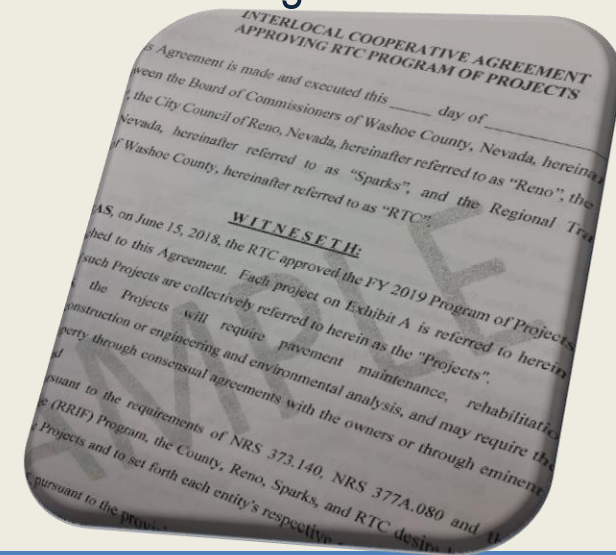


Interlocal Cooperative Agreement (ICA)



Three parts:

- 1) Authorize RTC to design, engineer, conduct right of way activities and construct the improvements
- 2) RTC Duties
 - Use staff or consultants to design, permit, and construct (including administration) the projects
 - Acquire needed right of way
 - Pay for the project using Fuel Tax, Sale Tax, RRIF or Federal funding
- 3) Local Jurisdiction Duties
 - Cooperate with RTC
 - Assist in communications with the public
 - Assist with utility relocation communication/process
 - Accept ownership and maintenance of each project



Questions?



Thank You!

www.rtcwashoe.com

